

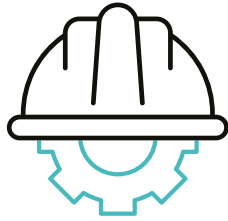


## BUILDING ENVELOPE REFURBISHMENT CONTRACTOR

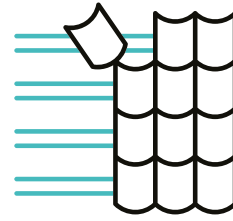
Working in Live Food & Drink Environments



## Key Statistics



Independent Commercial  
Contractor



Specialists in the  
Refurbishment of the  
Building Envelope – Roofing  
and Cladding



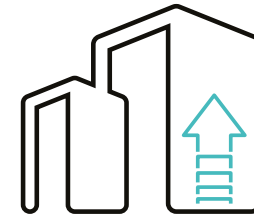
3 Operational Hubs –  
Motherwell, Manchester  
& London



Projected Turnover 22/23  
£20 million



28 Management /  
45 Site Personnel



Project Values from  
£50k - £5m



## Our Accreditations/Licenses

Our diverse range of divisions and services allow us to create solutions for new building projects, as well as the re-invention of existing properties.

**Our strategy and processes mean we continually deliver value through each of our services; cost-effectiveness, safety, sustainability, legislation and best-in-class products that enhance how a building looks and performs.**

All our divisions provide stand-alone solutions, as well as working seamlessly together. All this is driven by our accreditations, including ISO 9001, 14001 and 45001.

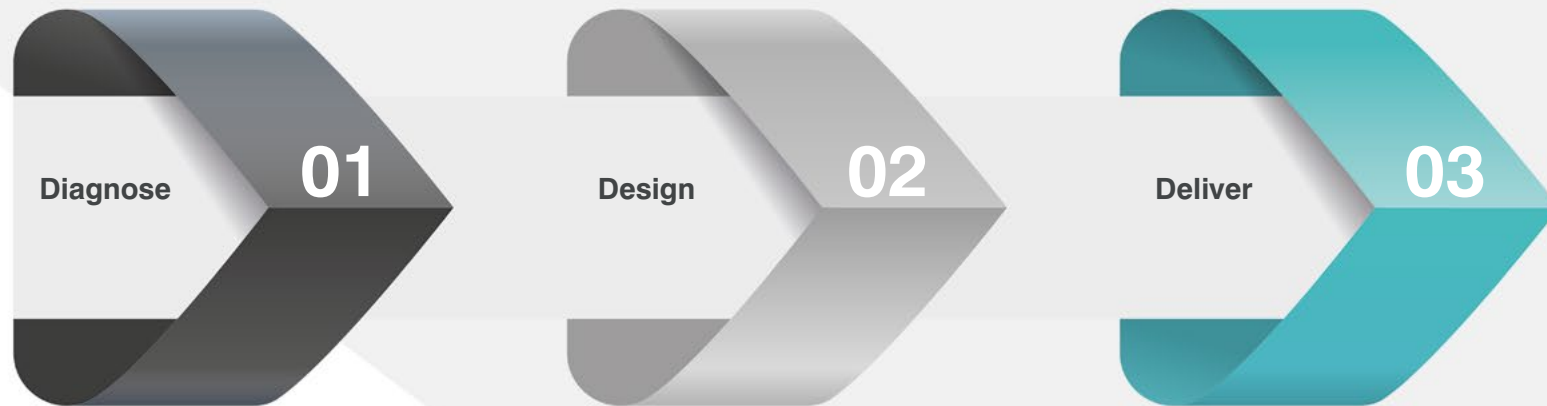
To view our Accreditations and Qualifications please click here and this would go to the following page - <https://www.starfishconstruction.com/resources>



# Diagnose, Design, Deliver

Our extensive property and building industry knowledge and experience enable us to deliver projects from planning through to completion. We Diagnose, Design and Deliver solutions for clients, working across a wide array of sectors, from both end-users as well as property managers, construction companies, architects and surveyors. Operational excellence comes from highly skilled and accredited staff, overseen by knowledgeable industry project managers.

We have earned our trusted and reliable reputation over many years, due to our partnership approach with clients and successful project outcomes. Our turnkey solutions mean that whether your project is a new build from the ground up, renovation or maintenance, our approach and expertise provides best-in-class and cost-effective ways to develop, enhance and protect your property today and in the future.



**To design the solution, we must first diagnose the problem.**

# Divisions & Services





# ROOFING

Our highly skilled and experienced roofing division team, along with our accredited processes, provide customers with the confidence required for planning, installation and aftercare of roofing projects.

With our extensive experience and your knowledge of your property portfolio, there is little need to outline the wide range of roofing systems and building types contained within Starfish Construction's successful project portfolio; it is more important to demonstrate why you would choose us over another contractor. It's the supporting skills we bring to a project that counts.





# CLADDING

On most occasions, the primary driver for installing a cladding system will usually be to create a visual impact on a building.

Although cladding does deliver on aesthetics, the added value of the performance; waterproofing the building and contributing to the overall thermal performance delivers beyond the look.

A cladding replacement project can be part of an overall building envelope removal and replacement or a standalone project. At the survey stage of the project, Starfish Construction can undertake an in-depth structural examination of the existing steelwork and any brickwork to ascertain the structure's failure level.







# ENVIRONMENTAL AND ASBESTOS REMOVAL

Our Environmental and Asbestos Removal Division provides the safe and legislative project management your building requires. From survey and analysis to project completion and safe disposal, we ensure employees and visitors within your facilities and the communities surrounding you are within a safe environment.

The Health and Safety Executive (HSE) licence allows Starfish Environmental & Asbestos Services to work with asbestos under the Control of Asbestos Regulations 2012. Our licence brings enormous responsibility, and our team carries out all aspects of the investigation and works with the utmost care and attention, backed by our experience and knowledge, mitigating risks to health and the environment.

As a License Asbestos Removal Contractor (LARC), we will manage every aspect of your project from initial contact to completion. To be HSE-approved licence holders, we must hold to the highest level of competence and undergo continual assessments to ensure we maintain our skills, knowledge and best practices throughout every project.







## ACCESS SYSTEMS

We provide a specialised UK-wide scaffolding design and installation service operated by a skilled and experienced team. Our NASC membership ensures we adhere to stringent guidelines on the quality and safety of all our scaffolding structures and assess solutions

In the live food and drink sector our project solutions allow our teams to work in all weather and keep your production floor free from contamination and water ingress. This can also allow for the safe overclad or removal of asbestos containing materials without disruption to your production schedule.

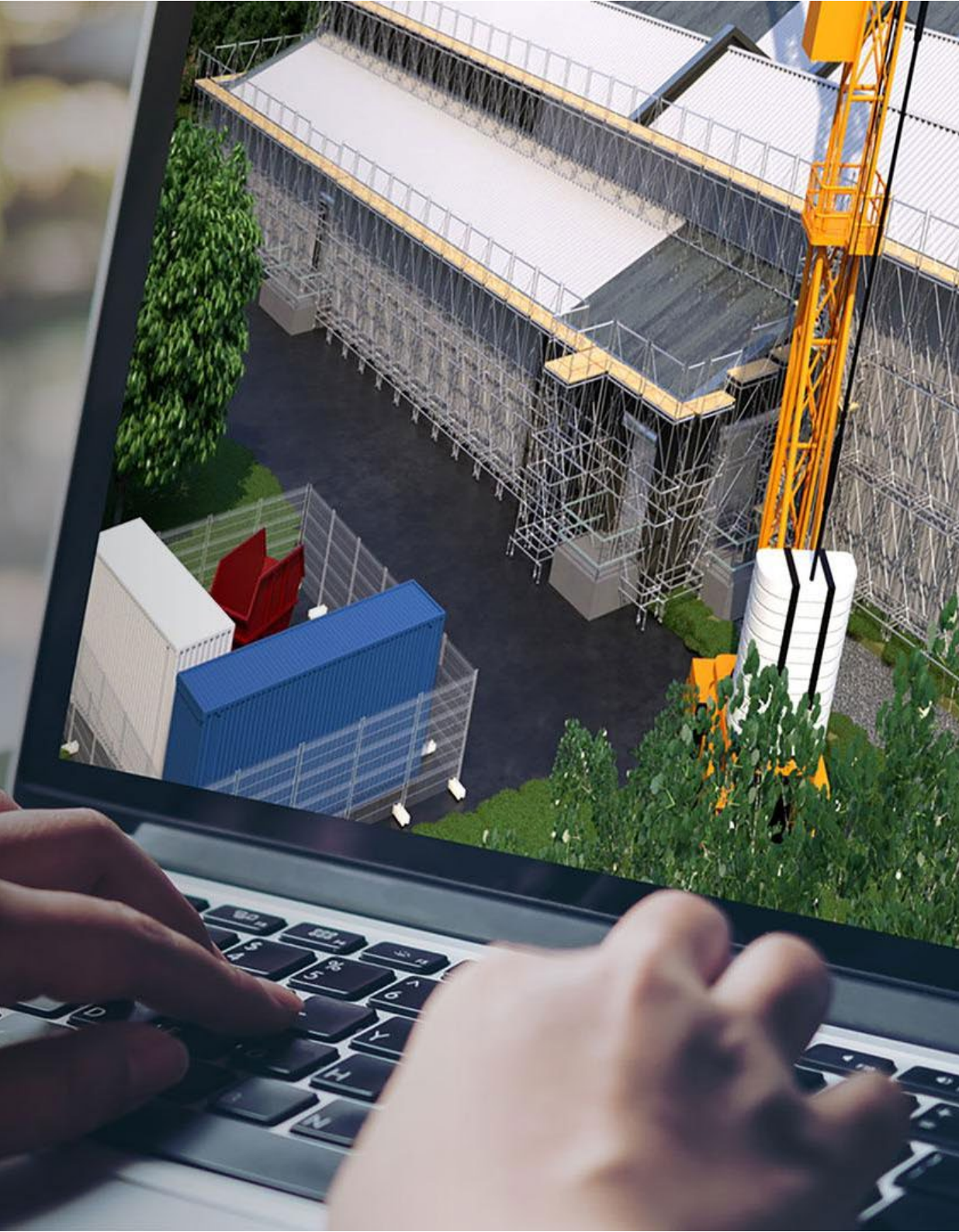
# **Design Consultancy & Technical Surveying**





# DESIGN CONSULTANCY

Our specialist design consultants can create a complete building solution or specific areas of the building envelope including roof design, cladding systems and internal fit-out.





# TECHNICAL SURVEYING

We use state of the art surveying equipment and software, including; drones, thermographic drones, moisture mapping, electronic leak detection, acoustic, U-value and condensation risk analysis.

Combined with structural examinations, we compile accurate technical reports, detailed scope and specifications of work which provides our clients with full costed options and best value solutions.





# Relevant Experience





## CASE STUDY: CANNING LINE ROOF PROJECT

This project involved removing an asbestos roof above an operational Canning Line and installing a new composite clad roof system and upgraded gutters. We also designed and upgraded the internal lighting to ensure the light conditions were in line with relevant lux requirements for this area.

To ensure no water ingress or contamination to the Canning Line below, we installed a fully sealed working platform above the factory area. We also incorporated a temporary drainage system in the unlikely event of water ingress during the works.

The completed re-roofing project is now fit for its purpose, offering a fresh, clean look. The white internal liner to the underside of the roof is now watertight, ensuring a suitable and safe environment for production in the future unhampered by a poorly performing roof.

**AREA:** 2000 m<sup>2</sup>

**DURATION:** 16 weeks







## CASE STUDY: DISTILLERY REFURBISHMENT

The old distillery building had become quite dilapidated and required significant upgrading. The primary focus was to remove and dispose of the Galbestos cladding from the roof tower, carried out by our trained operatives. We installed structural steel and a new flat roof system which will perform for a minimum of 25 years.

We have given the old distillery building a new lease of life and will be utilised as Research and Development facility helping create the next generation of distilled products for our client and their many customers across the globe.

**AREA:** 150 m<sup>2</sup> **DURATION:** 14 weeks





## CASE STUDY: SCOTTISH DISTILLER, BONDED WAREHOUSES

Starfish Construction Group were invited to look at a solution for our clients two dilapidated bonded warehouses.

Our technical survey team identified that the deterioration of the roof was due to Galbestos, which can become a critical health and safety issue. The stripping of the existing Galbestos coated steel roof sheets was a carefully coordinated part of the project due to the fragile state of the material. The replacement composite roof panel system was installed in stages, following on from the Galbestos removal team.

A natural air ridge ventilation system was also installed to complete the external roof project. Internally within the warehouse, Starfish Construction placed a crash deck during the removal and installation process to minimise the risk of falling debris. On completion of the external roof, a new sprinkler system and ATEX rated lighting were installed.

**AREA:** 8,800 m<sup>2</sup>

**DURATION:** 22 weeks





## CASE STUDY: ROOFING & M&E

As part of the designed remediation solution, we increased the overall depth of the roof and introduced thicker insulation to facilitate better U-values and temperature regulation. One significant problem to overcome was the M&E equipment, which had to be altered and raised. Due to the age of the existing mechanical ductwork on site, we replaced the ductwork.

We installed a new Big Foot Support System, a non-penetrative rooftop support, to ensure an even spread of weight distribution on the newly installed roof. In addition to raising and upgrading the M&E equipment, we also executed a comprehensive suite of tasks associated with upgrading the roof.

**AREA:** 4,500 m<sup>2</sup>

**DURATION:** 18 months





## CASE STUDY: SCOTTISH DISTILLER, MATURATION WAREHOUSES

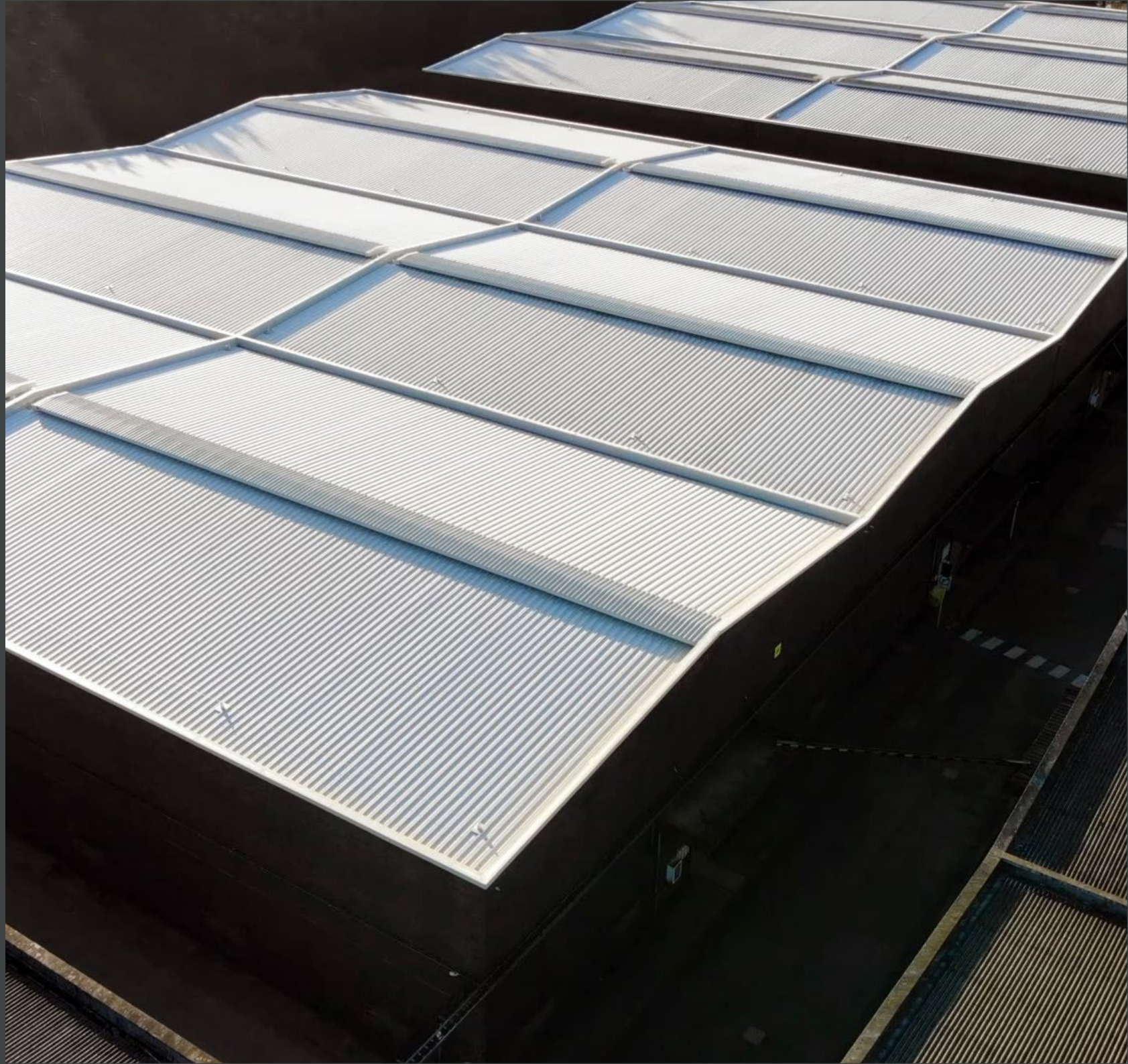
This project encompassed a series of upgrades, including the roof sheets of Warehouse 1 & 2 to prevent water ingress, condensation, and corrosion and improve the ridge to preserve existing ventilation levels, ensuring at least 1% free air openings. Starfish Construction evaluated the gutters and linings for upgrading or replacement and any necessary redesign.

The project scope included assessing any defective roof support structures and proposing rectification. A maintenance schedule and work instruction risk assessments were also provided, and the upgrades would also extend to the rainwater downpipes.

Our Starfish Construction Group sister company, Starfish Environmental and Asbestos Services (SEAS), licensed asbestos contractors, would work as part of the scope of works to remove the Asbestos insulating board (AIB) under roof liner panels before the roof's upgrade.

**AREA:** 12,00 m<sup>2</sup>

**DURATION:** 12 months





# Operational Hubs

The map shows our current locations and our strategic proposed Operational Hubs.

## ● Current Operational Hubs

Glasgow

Manchester

London

## ● Planned Future Expansion

Yorkshire

Midlands

