

PROJECT UPDATE RIVERDALE ROAD

Dear Residents and Leaseholders,

Please see below project update based on works started/completed to date up to 21.02.25.

BLUEBELL HOUSE:

- Scaffold erection is 100% complete.
- All existing timber decking & soffit have been 100% removed.
- Cleaning down of existing steel work is 80% complete - **Works on programme.**
- Decking has been ordered & material will be delivered W/C 10.03.25 – **Delivery will be made as programme.**
- New aluminium soffits have been ordered & material will be delivered W/E 07.03.25 - **Delivery will be made as programme.**

FOXGLOVE HOUSE:

- Scaffold erection is 100% complete – **Scaffold has been completed 2 weeks ahead of schedule.**
- All existing timber decking & soffit is around 100% complete – **3 weeks ahead of programme.**
- Cleaning down of existing steel work is 60% complete – **Currently around 3 weeks ahead of programme.**



PARKSIDE:

- Scaffold works are being pushed back by 2 weeks.

8

Photographic Evidence



Foxglove House

A photo showing decking & soffit removed.

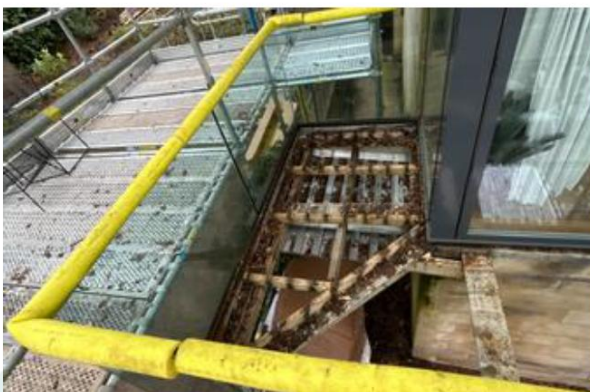


Foxglove House

A photo showing decking & soffit removed.

9

Photographic Evidence



Foxglove House

A photo showing decking & soffit removed.



Foxglove House

A photo showing decking & soffit removed.



Should you have any questions about the works, please don't hesitate to contact Geanina Rusu- Site Manager via email on gRusu@starfishconstruction.com or via telephone on **07983 356 770**.

Photographic Evidence



Foxglove House

A photo showing decking removal..



Foxglove House

A photo showing decking & soffit removed.

On-site look ahead WC 24.02.25:

BLUEBELL HOUSE:

- Complete steelwork coating.

FOXGLOVE HOUSE:

- Complete cleaning down of steelwork.
- Commence steelwork coating.





If you require any assistance at all please pop & see our Site Manager Paul Hopkins in the site office or give him a call on 07376302403.

Kind Regards,

Robert Morgan

Director of Projects

Midlands, London & South

