

PROJECT UPDATE RIVERDALE ROAD

Dear Residents and Leaseholders,

Please see below project update based on works started/completed to date up to 07.03.25

BLUEBELL HOUSE:

- Scaffold erection is 100% complete.
- All existing timber decking & soffit have been 100% removed.
- Cleaning down of existing steel work is 100% complete - **Works on programme.**
- Coating of existing steels is complete - **Works on programme.**
- Decking has been ordered & material will be delivered W/C 10.03.25 – **Delivery will be made as programme.**
- New aluminium soffits have been ordered & material will be delivered W/E 07.03.25 - **Delivery will be made as programme.**

FOXGLOVE HOUSE:

- All existing timber decking & soffit is around 100% complete – **3 weeks ahead of programme.**
- Cleaning down of existing steel work is 80% complete – **Currently around 3 weeks ahead of programme.**





PARKSIDE:

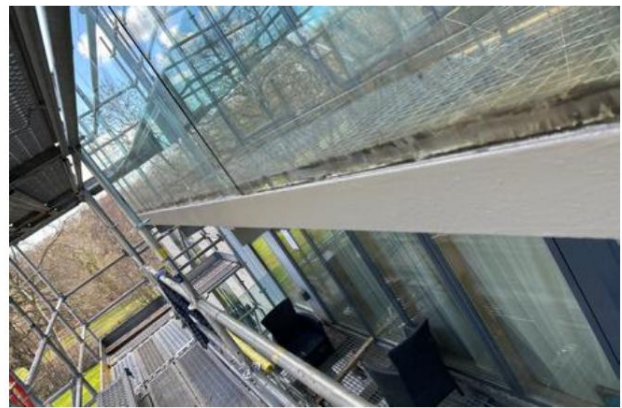
- Scaffold works are being pushed back by 2 weeks.

Photographic Evidence



Bluebell House

A photo showing steelwork coating.



Bluebell House

A photo showing steelwork coating.

8

Photographic Evidence



Bluebell House

A photo showing steelwork coating.



Bluebell House

A photo showing steelwork coating being tested for the correct micron levels.



Should you have any questions about the works, please don't hesitate to contact Geanina Rusu- Site Manager via email on gRusu@starfishconstruction.com or via telephone on **07983 356 770**.

Photographic Evidence



Bluebell House

A photo showing steelwork coating being tested for the correct micron levels.



Scaffold

A photo showing excess scaffold material being collected.

On-site look ahead WC 03.03.25:

BLUEBELL HOUSE:

- Take Soffit material delivery's.

FOXGLOVE HOUSE:

- Complete cleaning down of steelwork.
- Complete coating of steelwork.

If you require any assistance at all please pop & see our Site Manager Paul Hopkins in the site office or give him a call on 07376302403.

Kind Regards,

Robert Morgan

Director of Projects

Midlands, London & South



Should you have any questions about the works, please don't hesitate to contact Geanina Rusu- Site Manager via email on gRusu@starfishconstruction.com or via telephone on **07983 356 770**.



starfish
construction group

Progress Update

Riverdale Road

W/E 28.02 2025



Should you have any questions about the works, please don't hesitate to contact Geanina Rusu- Site Manager via email on gRusu@starfishconstruction.com or via telephone on **07983 356 770**.