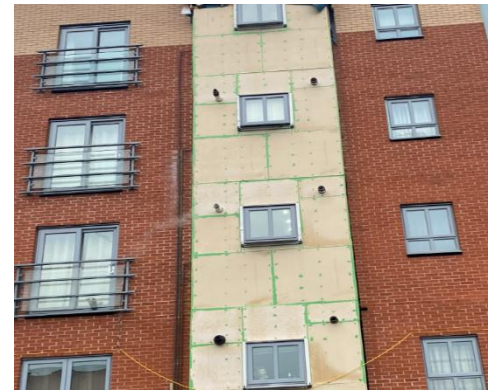
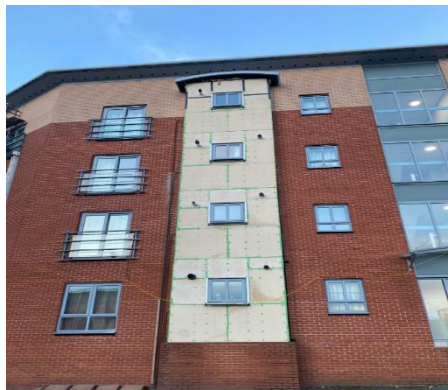


Statement from Courtney Greatorex - Resident Liaison Officer at Bedford and Leicester Courts - Moor Lane & Cregg Lane, Preston

We are pleased to inform you that Starfish Construction has been appointed by **Miller Homes** to carry out the works at **Bedford and Leicester Courts**. Please find below the latest updates regarding the **cladding Remediation works and onsite activities at Leicester Courts**, commenced from **Monday 1st December 2025**:



Leicester Court

The team continues to progress external façade activities across multiple elevations, focusing on Y-wall installation, EPDM application, and cladding removal/reinstatement.

latest updates are as follows:

Elevation B1, B2 & B3

- Y-wall installation completed
- EPDM installation to windows in progress

Elevation C2 & C3

- Y-wall installation in progress
- EPDM installation ongoing

Elevation D1

- Existing cladding fully stripped
- Y-wall installed

Elevation D2

- Cladding removed
- Y-wall installation scheduled for Monday

Elevation D3 & D4

- Cladding removed
- Y-wall installation pending

All activities remain on track, and the project continues to progress in accordance with the programme.

Planned Works for this week as follows:

- Continued Y-wall installation and EPDM works across Elevations B1, B2, B3, C1, C2, C3, D1, D2, D3, D4
- Works to commence on Elevations A1, A2, and C1
- Ongoing façade activities via scaffolding and MEWPs across the full elevation sequence



Gass Checks

As part of the ongoing works, In line with safety procedures, all boilers located within the cladding zone must be inspected both before and after the cladding works are carried out.

I will be conducting door knocking on **Tuesday 2nd December 2025** to arrange access for upcoming gas safety checks for **Wednesday 3rd December 2025** and **Thursday 4th December 2025**

To carry out the boiler checks, our Site Manager, Daniel Horwood, along with the gas safety engineer, will be visiting properties.

If you are available on either of those days and would prefer to schedule a specific time for access, please get in touch with myself Courtney Greatorex your Resident liaison officer, it would be greatly appreciated.

We sincerely thank all leaseholders and residents for their cooperation in facilitating access to the properties.

To book an appointment, please contact me by phone, text, or email:

Courtney Greatorex

Resident Liaison Officer

Email Address: cgreatorex@starfishltd.com

Telephone : 07939 894015

 News & Updates



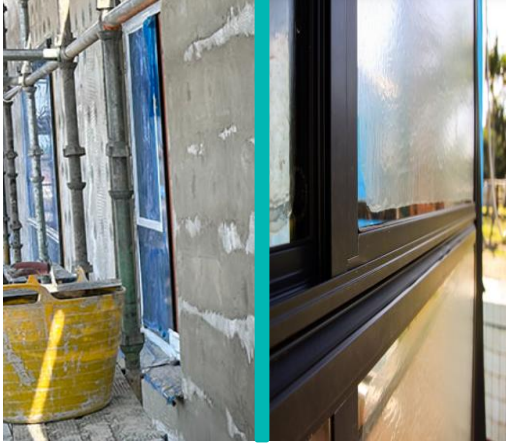
Our Welfare unit is located on the front entrance to the car park area between Bedford and Leicester Court

 News & Updates

Due to the cut-through patch currently being closed, please follow the directions shown on the diagram to access the main road,



News & Updates

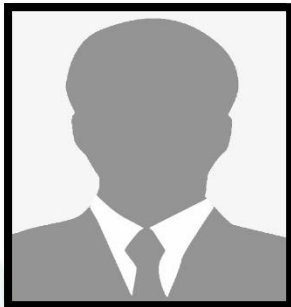


- To protect your privacy during the cladding works at your elevation, we will be applying a temporary frosted window covering to your windows while work is taking place. These coverings will still allow sunlight to come through, This will ensure that you are not overlooked by operatives working on the scaffolding. The coverings are removable and will be taken down once works in your area are complete.

We will continue to keep you updated each week as the project progresses.

Should you have any questions about the works, please do not hesitate to contact me directly.

Contact information



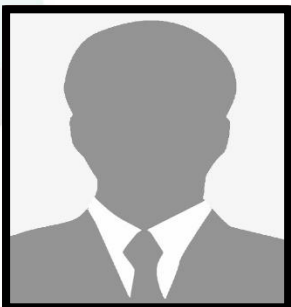
Resident Liaison Officer

Name: Courtney Greatorex

Telephone: 07939 894015

Email: CGreatorex@starfishltd.com

Working hours: 8am-5:00pm



Site Manager

Name: Daniel Horwood

Telephone: 07940 022295

Email: dhorwood@starfishltd.com

Working hours: 8am-5:00pm