

## Statement from Courtney Greatorex - Resident Liaison Officer at Kaber court, Horsfall Street, Liverpool, L8 6RY

Dear Residents and Leaseholders,

We are pleased to inform you that **Starfish Construction** has been appointed by **Kaber Court Management LTD** to undertake the remediation of cladding systems on two apartment blocks within the development at **Kaber Court, Horsfall Street, Liverpool, L8 6RY**.

Please find below the latest updates regarding the reinstatement works and onsite activities scheduled for the week commencing **Monday 13th April 2026**.



### News & Updates

#### Resident Works Update

The team has continued to make steady progress across site this week, with works advancing well in all planned areas. We appreciate the ongoing cooperation from residents — your support helps us maintain a safe, efficient and well-coordinated programme.

#### Upcoming Works – Week Commencing 13.04.2026

**Block C – Completion & QA Sign-Off** - Block C has now been fully completed and successfully signed off by QA, with all works finalised by the end of Friday 10 April. This marks a key milestone in the programme and keeps us firmly on track.

**Block D – Cherry Picker Works** - Cherry picker operations on Block D are continuing as planned, with the team progressing well toward the targeted completion date of 17 April. We appreciate residents' patience while these access works are carried out.

**Phase 2 Accessible Elevations** - All accessible elevations within Phase 2 have now been completed, maintaining strong progress across the programme.

**Cherry Picker Works Elevation E** - Works to the left-hand return of Elevation E are now complete. The team is currently progressing along the H-return, including Tyvek installation and sill works. Completion is estimated for week commencing 20 April.

**Scaffolding Removal** - All scaffolding has now been fully removed from site, marking another significant step forward in the project.

**Final Phase Scaffolding** - Preparations are underway to begin erecting the final phase of scaffolding from 20 April 2026. Further details will be shared as the programme advances.



**Subject: Underpass Access Disruption & Temporary Parking Restrictions Week Commencing Monday 20th April 2026**

**Parking Restriction Details follow below:**

- **Effective Date:** Monday 20<sup>th</sup> April 2026
- **Restriction Period:** Friday 24<sup>th</sup> April 2026
- **Reason:** Essential scaffolding work in the underpass area using plant machinery.
- **Working Hours:** 8.00am – 4.00pm

**Dear Resident,**

We are writing to inform you of essential scaffolding works taking place within the underpass, which will require temporary access restrictions. **Scaffolding will be erected and in operation throughout this period, and as a result, access through the underpass**



**will be limited.**

Our operatives will **only be able to move equipment in the case of an emergency**. Due to the sensitive nature of the works, movement may not be immediate.

**For this reason, if you rely on access through the underpass, please arrange alternative parking during these times.**

**Pedestrian Access**

A dedicated **marshal will be present** throughout the works to assist pedestrians passing through the underpass safely.

Where possible, we kindly ask residents to **use the alternative entrance/exit route via Block D** to minimise disruption and ensure safe movement around the site

**Your Cooperation**

We appreciate your patience and understanding while these essential works are carried out. Keeping the area clear and following the temporary access guidance will help us complete the works safely and efficiently.

If you have any concerns or questions, please contact your Resident Liaison Officer:

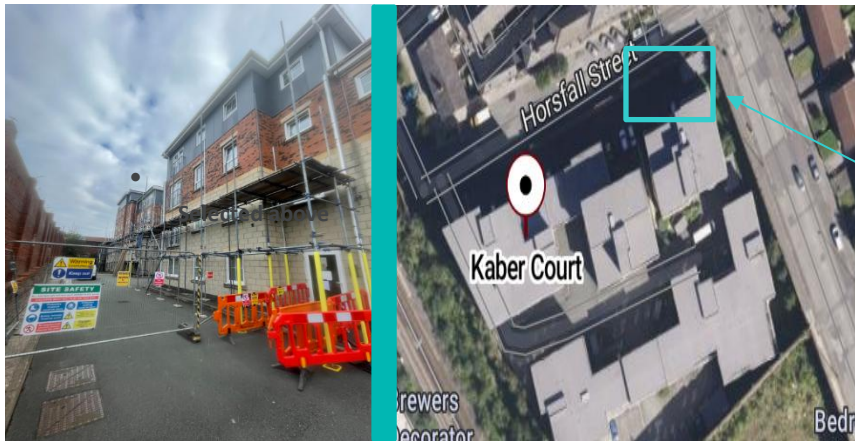
**Courtney Greatorex T: 07939894015**

**E: CGreatorex@starfishltd.com**

Yours sincerely, **Starfish Construction**



 Welfare location



As you enter through the main gate, our welfare unit is located in the car park to your left, at the far back of the site.

If you have any questions or concerns regarding the ongoing works, please don't hesitate to contact your Resident Liaison Officer, **Courtney Gcreatorex** using the details provided below. Your continued cooperation and support are greatly appreciated as we work to deliver these improvements safely and efficiently.



## Contact information



**Resident Liaison Officer**

Name: Courtney Greatorex

Telephone: 07939894015

Email: [CGreatorex@starfishltd.com](mailto:CGreatorex@starfishltd.com)

Working hours: 9am-4:30pm



**Site Manager**

Name: Matthew Critchell

Telephone: 07908 552766

Email: [mCritchell@starfishltd.com](mailto:mCritchell@starfishltd.com)

Working hours: 8am-5:00pm

We will continue to keep you updated each week as the project progresses.  
Should you have any questions about the works, please do not hesitate to contact me directly